




Acrytec 
PANEL INDUSTRIES





NEW CONSTRUCTION



BUILDING REFURBISHMENT

2	Sample Project
3	Index Page
4	Company Profile
5	Acry NC Rainscreen System Overview
6	Acry NC 25 Section View
7	Acry NC 25 Insulated Section View
8 - 9	Test Data
10	Gemtex Finish Colour Chart
11	Fine Quartz Colour Chart
12	QuartzKote Finish Colour Chart
13	Metallic and Natural Colour Chart
14	Stone and Slate Colour Chart
15	Woodgrain Finish Colour Chart
16	EuroKote Finish Colour Chart
17	Masonry Staining
18-28	Sample Projects

First and foremost Acrytec Panel Industries is a company focused on customer satisfaction. Acrytec is constantly seeking new and efficient ways to better serve the customer. The partners at Acrytec have a long history in the construction industry. With well over 20 years of construction experience, they understand what satisfies customers most.

Our complete panel systems provide customers with worry-free durability and performance. By engineering our systems to the highest worldwide standards, we believe our systems outperform our competition. All of our systems have been tested by third party engineering firms to ensure they satisfy and perform as required.

Whether looking to breathe new life into old and tired structures or to create a new and vibrant statement, Acrytec's many finish options are sure to please.

Customer satisfaction and product quality are always a top priority at Acrytec Panel Industries.

The Acry NC Rainscreen systems are engineered for commercial, industrial and residential applications. Featuring the Acry NC (non combustible) panel, these systems are available in 2 different configurations.

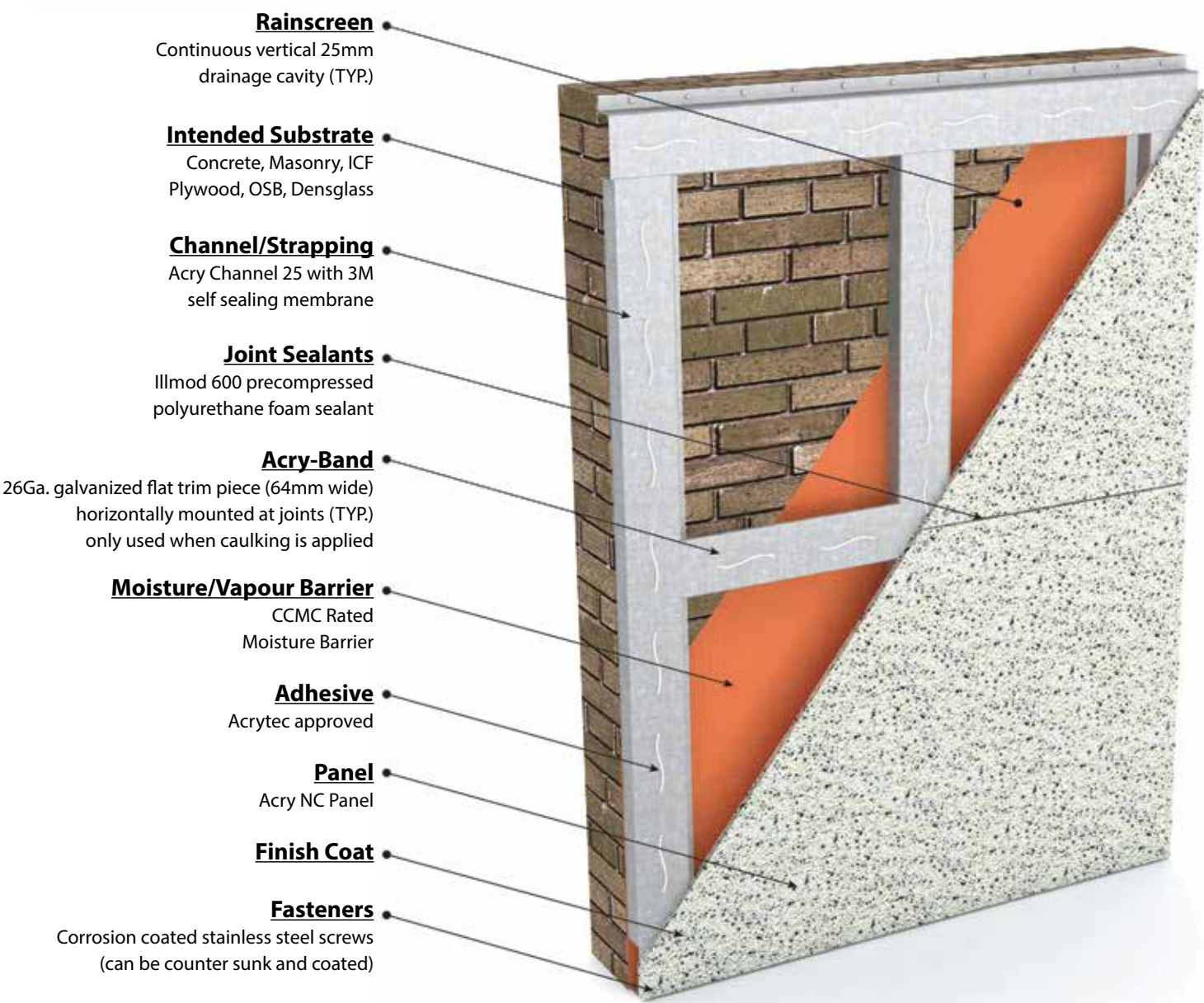
NC 25: Moisture barrier, 25mm channel, backer components, adhesive, Acry-NC panel, fasteners, caulking or sealant.

NC 25 insulated: 18 gauge galvanized Z girt (optional thermablock available), insulation + barrier, 25 mm deep 18 gauge galvanized channel with self-sealing tape and ventilation/drainage holes, 3/16” industrial stainless steel rivet, backer components, adhesive, Acry NC panel, corrosion coated stainless steel screws, joint treatment.

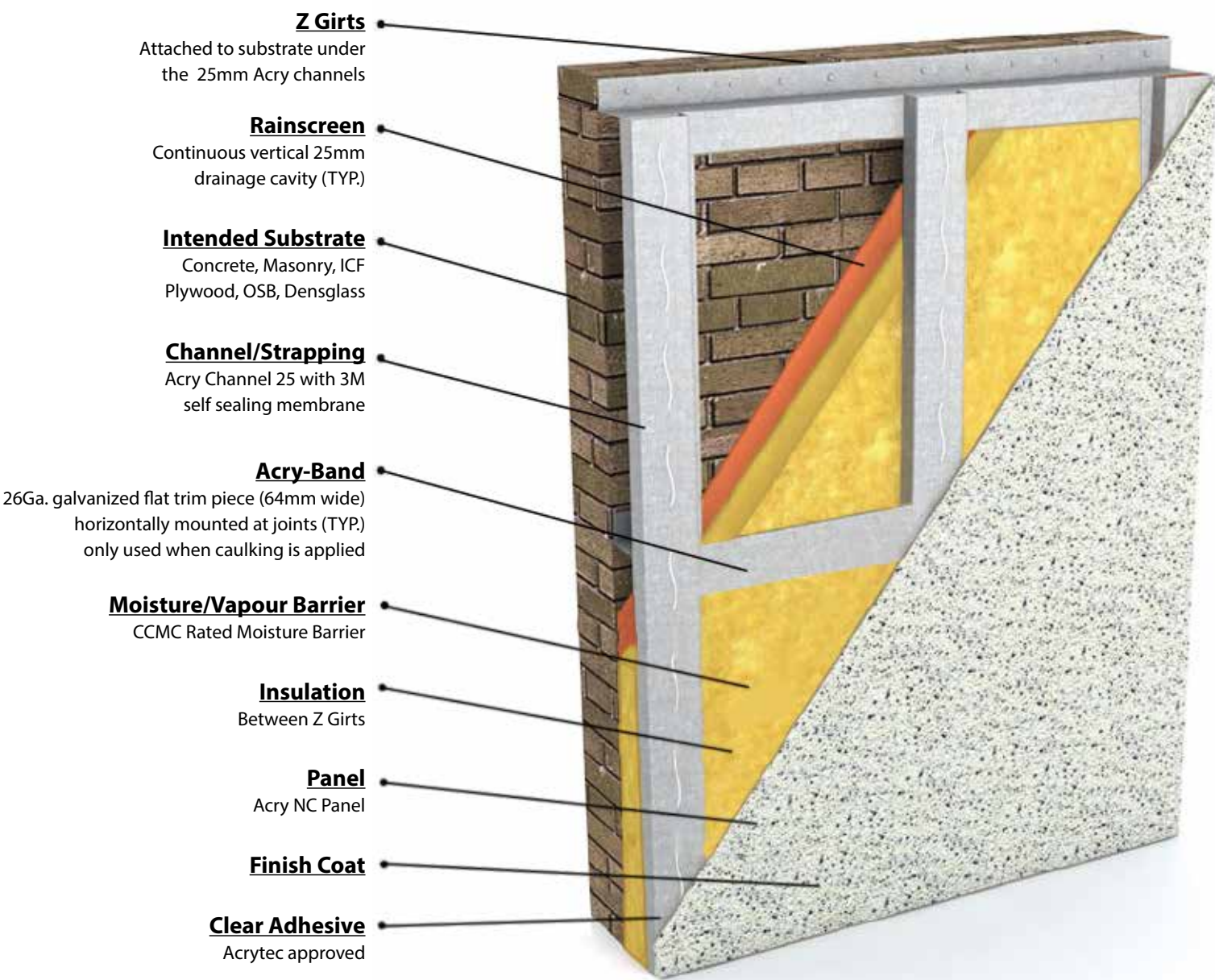
Acrytec Panel Industries’ Acry NC panel is a glass fiber reinforced concrete panel. These non-combustible panels are finished in a wide variety of textures and colours in Acrytec’s Ontario facility. Colour, texture and design are customizable to meet most designers’ visions. Application/uses of the Acry NC panel can vary greatly, from complete cladding of industrial/commercial projects to small residential accent areas. With the ability to offer pre-finished corner details, as well as modular sized panels that may be cleanly cut on site using standard power tools, Acrytec Panel Industries can provide a product that is brilliant, durable, and long lasting, to meet your individual needs wherever they may be.

**Our panels can also be used individually as decorative panels and accents.*

ACRY NC 25



ACRY NC 25 INSULATED



- **Air Tightness (infiltration)** under incrementally increased positive static pressure differentials, up to a maximum of ≈ 300 Pascals;
- **Water Tightness** under incrementally increased positive static pressure differentials (simulated driving rain wind pressures) of 150, 200, 300, 400, 500, 600, and 700 Pascals with each pressure condition applied for a period of 15 minutes with the panel in a vertical position;
- **Structural performance**, resistance to deflection including blow-out, of the entire assembly under incrementally applied static pressure differentials, up to maximum design positive and negative loads of 3000 Pa, respectively;
- **Structural performance**, resistance to deflection including blow-out, of the “rainscreen” portion of the assembly under incrementally applied static pressure differentials, up to maximum design positive and negative loads of 3000 Pa, respectively;
- **Flame Spread and Smoke Developed Rating** based upon triplicate sample testing conducted in accordance with CAN/ULC-S102-07.
- **Acry NC panel meets CAN/ULC-S114-05 as a Non Combustible construction material.**
- **Acrytec panels are ULC certified in both Canada and the USA**
 - **U301 2 hour** rated for wood construction
 - **U337 1 hour** rated for wood construction
 - **U425 45 min, 1 hour, 1:30 minutes, 2 hour** rated for steel construction

Note: for actual test results visit our website: www.acrytecpanel.com

Properties		
Material	Glass-fibre reinforced lightweight concrete, asbestos-free	
Building Material Class	A1, non-combustible in compliance with DIN 4102, part 4.2.2.1d	
	Acry NC panel meets CAN/ULC-S114-05 as a Non Combustible construction material	
Standard Board Thickness*, mm	15mm	
Apparent density (dry)	Covering layer	980 kg/m ³
	Core	600 kg/m ³
Characteristic thermal conductivity λ_R	Covering layer	0.185 W/(mK)
	Core	0.115 W/(mK)
Moisture content (air dry)	approx. 7 %	
Moisture absorption (95% RH)	≤ 5 % by wt.	
Length and width tolerance of standard boards	± 1 mm	
Thickness tolerance of standard boards	± 1 mm	
Modulus of elasticity E ***	e.g. for boards 20 mm thick $\geq 3,000$ N/mm ²	
Tensile bending strength ***	e.g. for boards 20 mm thick ≥ 3.5 N/mm ²	
Compressive strength	approx. 9 N/mm ²	
Alkalinity (pH value)	approx. 12	

CAN4-S114-05					
Standard Method of Test for Determination of Non-Combustibility in Building Materials					
Trial	Maximum Temperature Rise (°C)	Flaming During Last 14:30 min.	Initial Weight (g)	Final Weight (g)	Percent Weight Loss
1	**	No	66.12	60.60	8.3
2	**	No	65.80	60.29	8.4
3	1.1	No	65.32	60.47	7.4
4	**	No	65.36	60.20	7.9
Mean:	1.1				
Maxima Specified by CAN4-S114:	36 (mean)	No			20.0 (individual)
** The temperature never exceeded the initial stabilized furnace temperature					
Testing provided by EXP, EXOVA and CAN-BEST					

Acrytec Gemtex is a multi-coloured, protective and decorative coating consisting of coloured aggregates and oversized mica flakes, embedded in a clear, 100% acrylic resin. Its distinctive features allow the designer to create attractive and unique surfaces.



* Texture and colour displayed are for demonstration. Slight variation on colour may occur. Acrytec recommends that final colour selection be made from a physical sample in the desired texture and colour.

Note: custom colours are available at no extra charge.

Medium texture sandblast finish embedded in 100% acrylic resin.



* Texture and colour displayed are for demonstration. Slight variation on colour may occur. Acrytec recommends that a final colour selection be made from a physical sample in the desired texture and colour.

Note: custom colours are available at no extra charge.

QUARTZKOTE

Acrytec Quartzkote finish is a multi-coloured, protective coating consisting of coloured natural stone chips embedded in a clear, 100% acrylic resin. It is the most visual of the Acrytec finishes with multiple colour aggregates forming a finish that resembles natural coloured stone.



** Texture and colour displayed are for demonstration. Slight variation on colour may occur. Acrytec recommends that a final colour selection be made from a physical sample in the desired texture and colour.*

Note: custom colours are available at no extra charge.

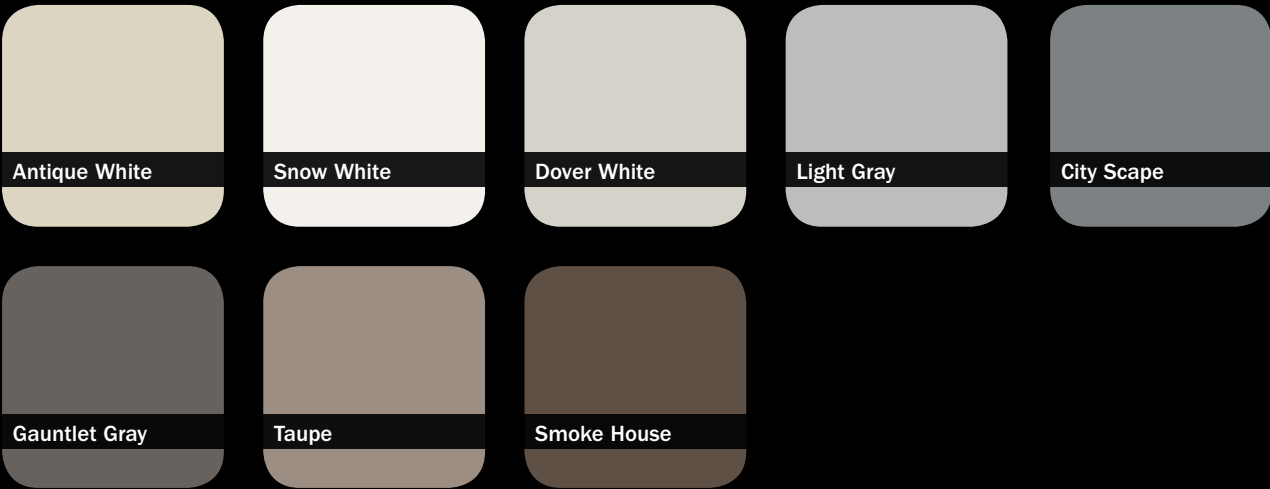
METALLIC & NATURAL

Custom colour matching is available for the Metallic and Natural Acry-panel. We match to any colour code from premium paint manufacturers Benjamin Moore or Para Paints. Ask our representative for more information.

METALLIC COLOUR CHART



NATURAL COLOUR CHART



** Texture and colour displayed are for demonstration. Slight variation on colour may occur. Acrytec recommends that a final colour selection be made from a physical sample in the desired texture and colour.*

Note: custom colours are available at no extra charge.

STONE



SLATE



** Texture and colour displayed are for demonstration. Slight variation on colour may occur.
Acrytec recommends that final colour selection be made from a physical sample in the
desired texture and colour.*

Note: custom colours are available at no extra charge.

FINE TEXTURED WOOD



TEXTURED WOOD



Custom colour matching is available for the Woodgrain Acry-panel. We match to any colour code from premium paint manufacturers Benjamin Moore or Para Paints. Ask our representative for more information.

** Texture and colour displayed are for demonstration. Slight variation on colour may occur.
Acrytec recommends that final colour selection be made from a physical sample in the
desired texture and colour.*



PREMIUM PAINT COLOUR MATCH

EUROKOTE

Custom colour matching is available for the Eurokote Acry-panel. We match to any colour code from premium paint manufacturers Benjamin Moore or Para Paints. Ask our representative for more information.

** Texture and colour displayed are for demonstration. Slight variation on colour may occur. Acrytec recommends that final colour selection be made from a physical sample in the desired texture and colour.*



EUROKOTE TEXTURE



PREMIUM PAINT COLOUR MATCH

MASONRY STAINING



BEFORE

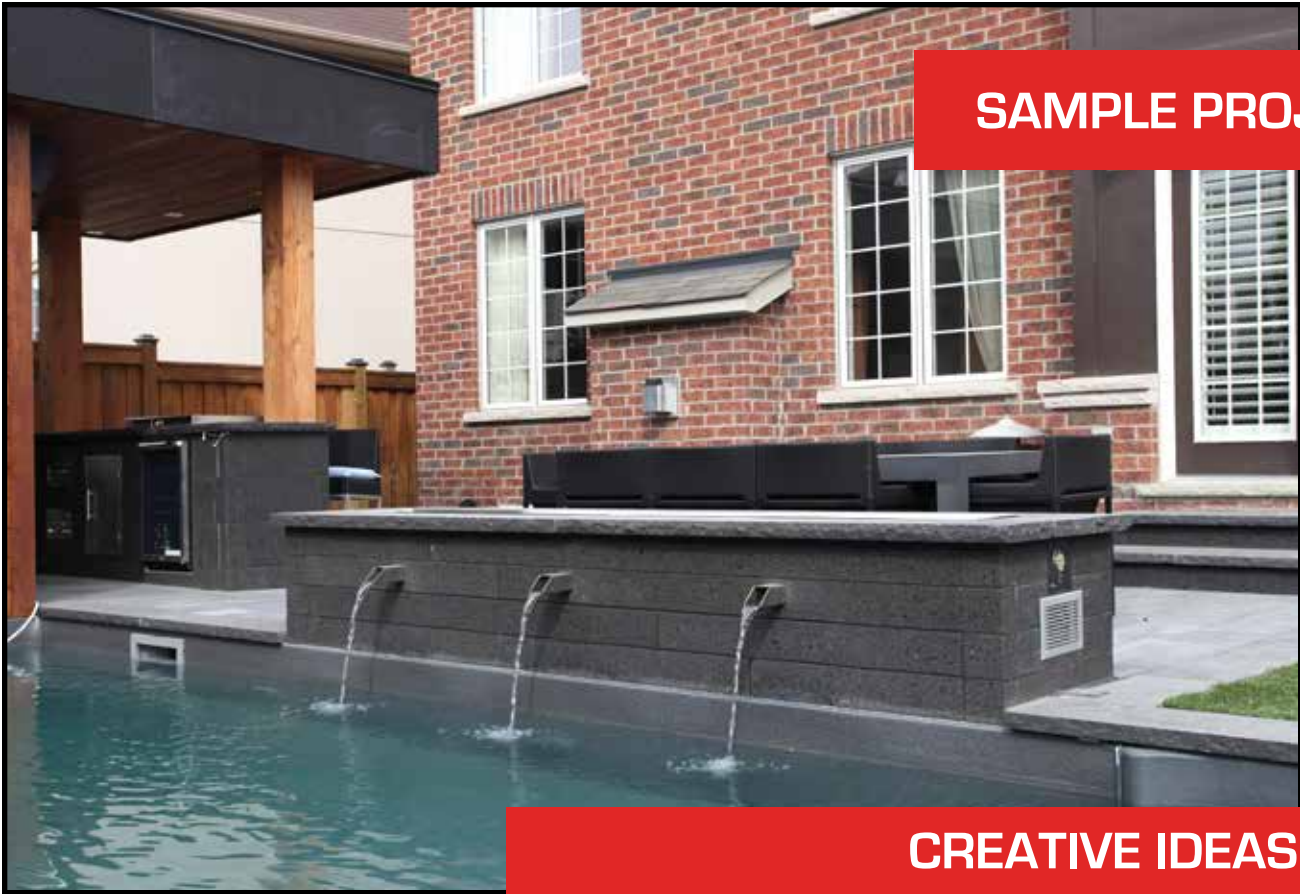


AFTER

RESIDENTIAL PROJECTS



SAMPLE PROJECTS



CREATIVE IDEAS



RESIDENTIAL



MODERN DESIGN



NEW CONSTRUCTION



NEW CONSTRUCTION



NEW CONSTRUCTION



RESTORATION



MULTI-USE CONSTRUCTION



REFACING



MULTI-USE CONSTRUCTION



MODULAR REFACING



KORTRIGHT CENTRE FOR CONSERVATION



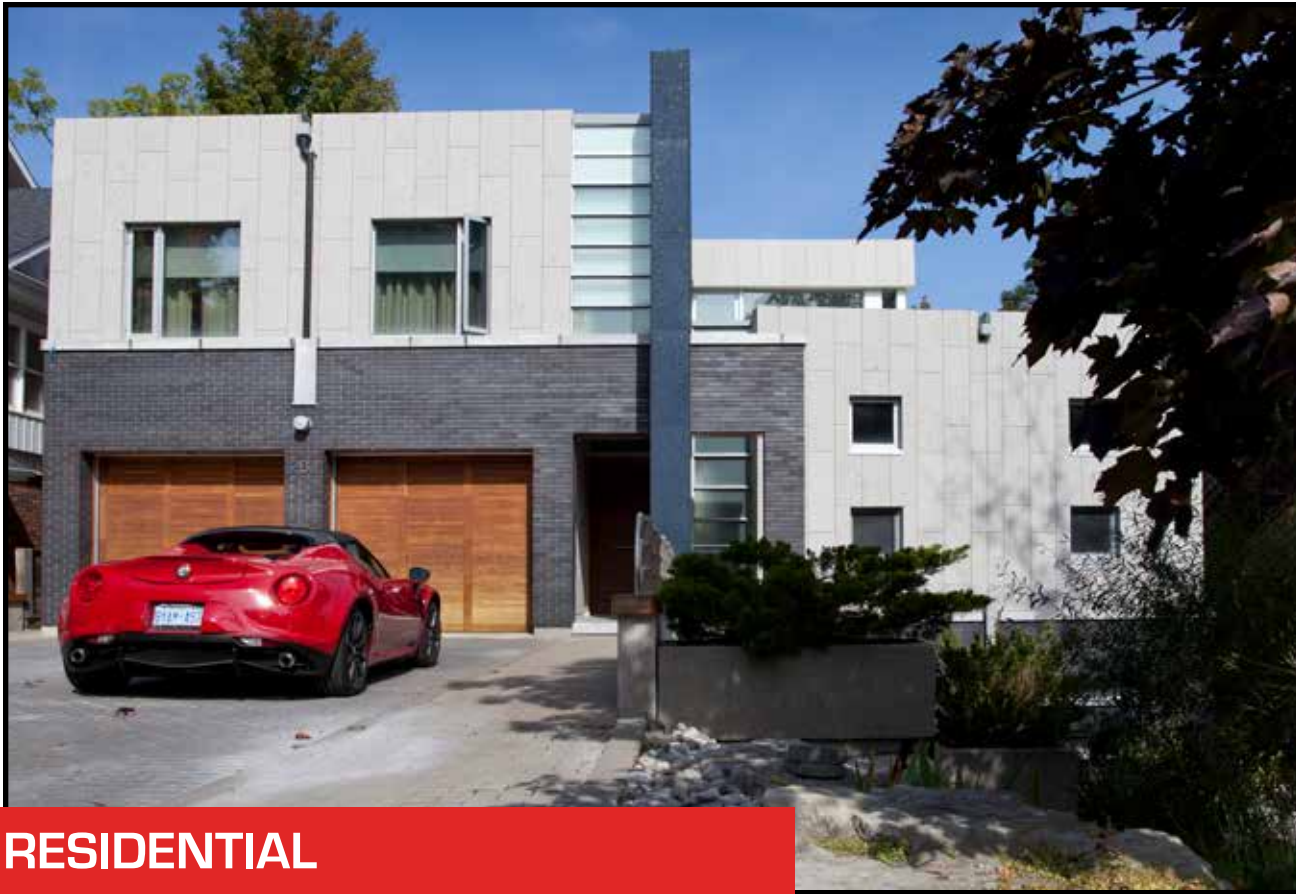
INSTITUTIONAL RECLADDING



MANULIFE BUILDING - PANORAMA RESTAURANT



BUILDING REFURBISHMENT



RESIDENTIAL



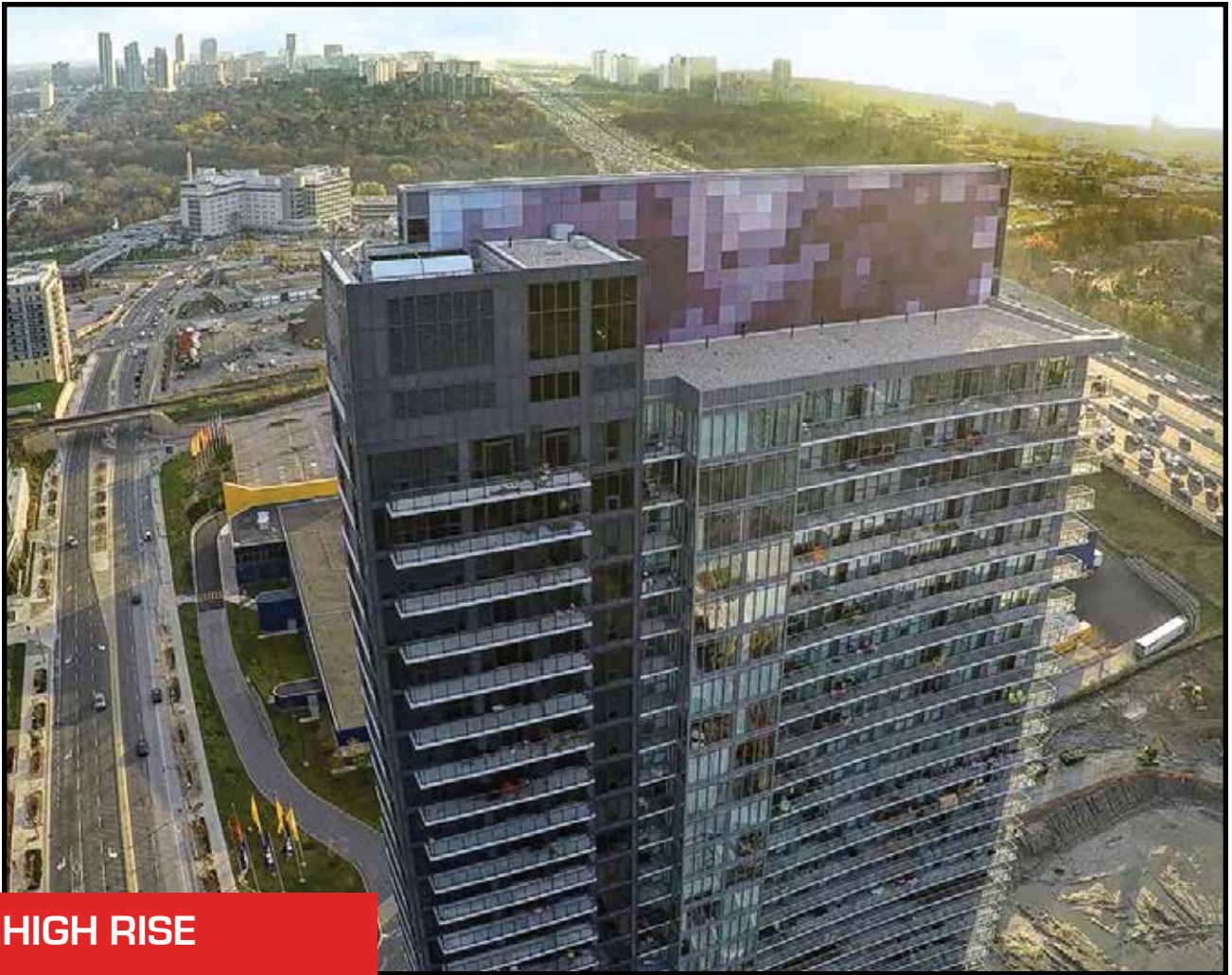
INTERNATIONAL PROJECTS



RESIDENTIAL



INTERNATIONAL PROJECTS



HIGH RISE

WWW.ACRYTECPANEL.COM

ACRYTEC PANEL INDUSTRIES

40 Gaudaur Road, Unit 1
Woodbridge, ON, Canada L4L 4S6

Toll: 1-800-316-9430

Tel: 905-326-3749

Fax: 905-326-2732

info@acrytecpanel.com