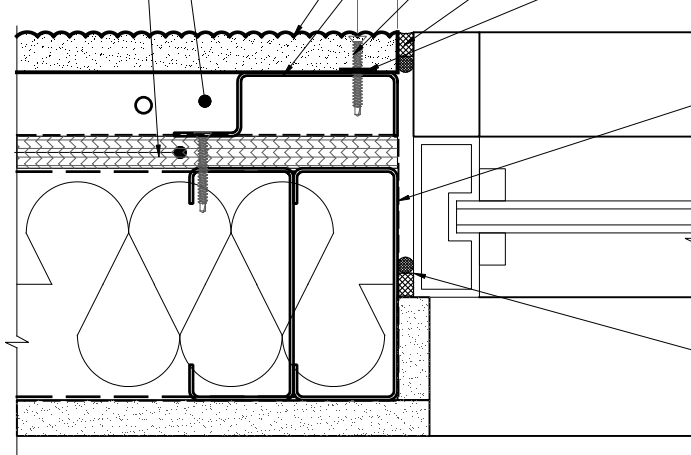


HORIZONTAL CHANNEL  
AT BOTTOM OF WALL  
C/W DRAINAGE  
HOLES @100mm [4"] O.C.

EXTERIOR SHEATHING

±16  
[0.63]



ACRYTEC PANEL

18Ga GALVANIZED  
ACRY CHANNEL  
C/W DRAINAGE HOLES  
AT 100mm [4"]  
O.C. VERTICALLY, MOUNTED  
AT 400mm [15.75"] MAX. O.C.

ACRYTEC PANEL SPEC  
CORROSION COATED  
STAINLES STEEL FASTENERS  
SET BACK MIN. 16mm [0.625"]  
FROM EDGE OF PANEL

COLOUR MATCHED SEALANT  
AND BACKER ROD  
OR USE ILLMOD 600

12mm [0.5"] BEAD OF  
ACRYTEC SPECIFIED ADHESIVE  
APPLY CONTINUOUSLY TO  
ALL ACRY CHANNEL

MOISTURE BARRIER

SEAL BETWEEN WINDOW FRAME  
USING AN APPROVED SEALANT

INTERIOR

NOTE: ALL WINDOW OPENINGS SHALL BE WRAPPED AND SEALED  
BY OTHERS PRIOR TO COMMENCING ACRYTEC PANEL INSTALLATION



40 Gaudaur Road, Unit 1  
Woodbridge, Ontario, Canada, L4L 4S6  
T: 905.326.3749 | F: 905.326.2732  
Toll: 1.800.316.9430 | www.acrytecpanel.com

TITLE:

**VERTICAL JAMB DETAIL  
WITH BRICK MOULD**

SCALE: N/A

**D-22**