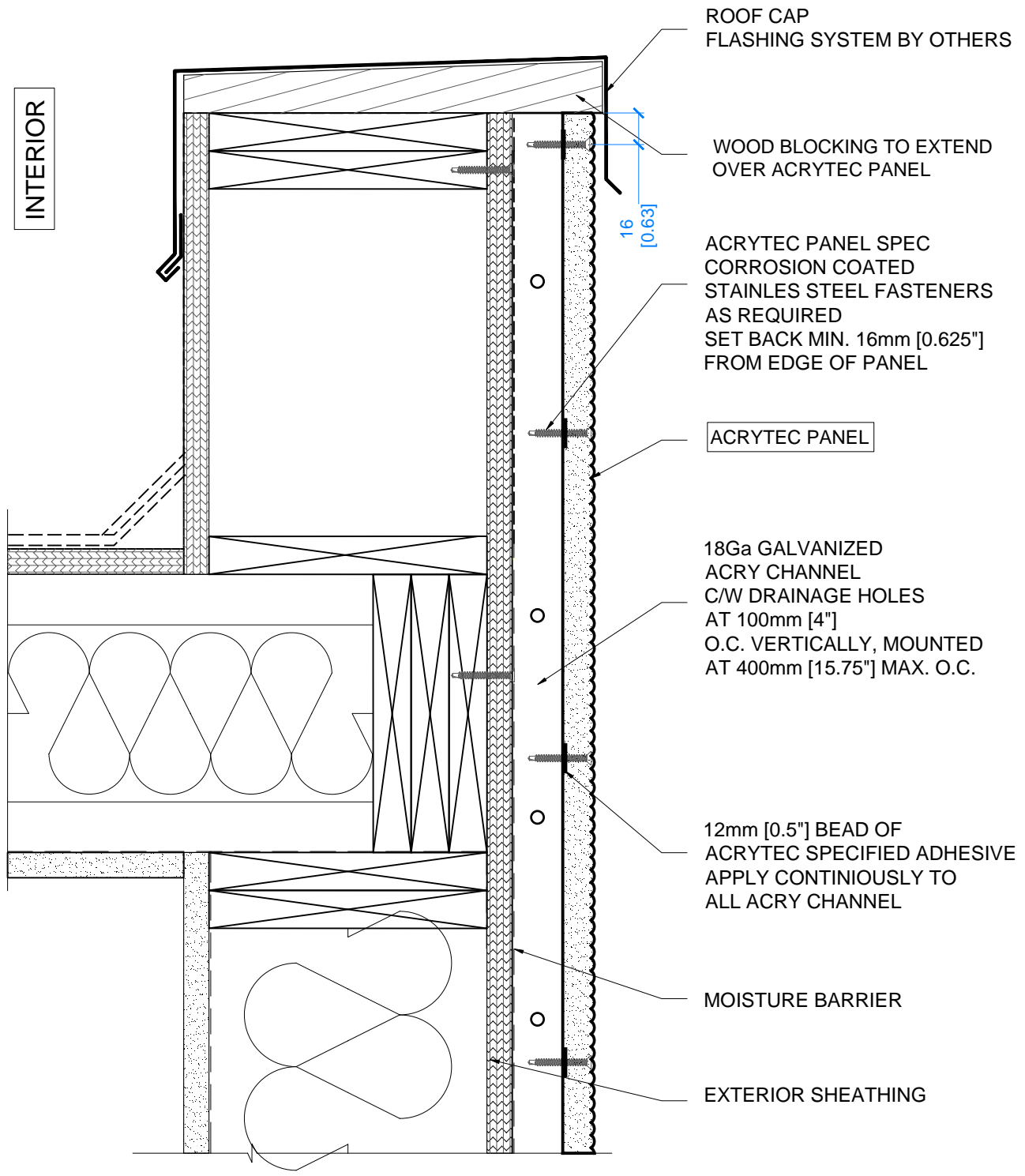


INTERIOR



ROOF CAP
FLASHING SYSTEM BY OTHERS

WOOD BLOCKING TO EXTEND
OVER ACRYTEC PANEL

ACRYTEC PANEL SPEC
CORROSION COATED
STAINLES STEEL FASTENERS
AS REQUIRED
SET BACK MIN. 16mm [0.625"]
FROM EDGE OF PANEL

ACRYTEC PANEL

18Ga GALVANIZED
ACRY CHANNEL
C/W DRAINAGE HOLES
AT 100mm [4"]
O.C. VERTICALLY, MOUNTED
AT 400mm [15.75"] MAX. O.C.

12mm [0.5"] BEAD OF
ACRYTEC SPECIFIED ADHESIVE
APPLY CONTINUOUSLY TO
ALL ACRY CHANNEL

MOISTURE BARRIER

EXTERIOR SHEATHING



40 Gaudaur Road, Unit 1
Woodbridge, Ontario, Canada, L4L 4S6
T: 905.326.3749 | F: 905.326.2732
Toll: 1.800.316.9430 | www.acrytecpanel.com

TITLE:
**EXTERIOR WALL AT
ROOF PARAPET LOCATION**

SCALE: N/A

D-21