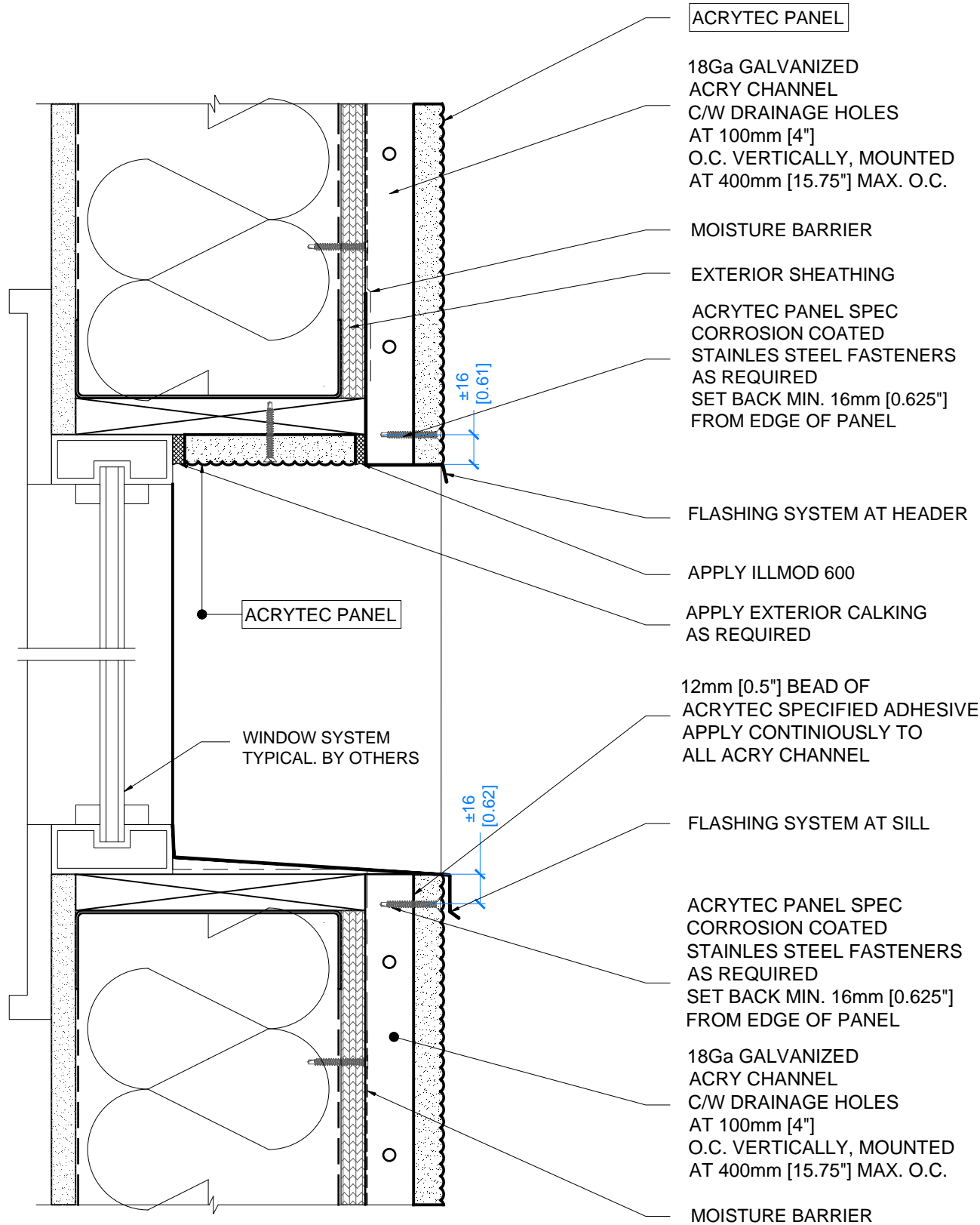


INTERIOR



ACRYTEC PANEL

18Ga GALVANIZED ACRY CHANNEL C/W DRAINAGE HOLES AT 100mm [4"] O.C. VERTICALLY, MOUNTED AT 400mm [15.75"] MAX. O.C.

MOISTURE BARRIER

EXTERIOR SHEATHING

ACRYTEC PANEL SPEC CORROSION COATED STAINLES STEEL FASTENERS AS REQUIRED SET BACK MIN. 16mm [0.625"] FROM EDGE OF PANEL

FLASHING SYSTEM AT HEADER

APPLY ILLMOD 600

APPLY EXTERIOR CALKING AS REQUIRED

12mm [0.5"] BEAD OF ACRYTEC SPECIFIED ADHESIVE APPLY CONTINUOUSLY TO ALL ACRY CHANNEL

FLASHING SYSTEM AT SILL

ACRYTEC PANEL SPEC CORROSION COATED STAINLES STEEL FASTENERS AS REQUIRED SET BACK MIN. 16mm [0.625"] FROM EDGE OF PANEL

18Ga GALVANIZED ACRY CHANNEL C/W DRAINAGE HOLES AT 100mm [4"] O.C. VERTICALLY, MOUNTED AT 400mm [15.75"] MAX. O.C.

MOISTURE BARRIER

ACRYTEC PANEL

WINDOW SYSTEM TYPICAL BY OTHERS

NOTE: ALL WINDOW OPENINGS SHALL BE WRAPPED AND SEALED BY OTHERS PRIOR TO COMMENCING ACRYTEC PANEL INSTALLATION



40 Gaudaur Road, Unit 1  
Woodbridge, Ontario, Canada, L4L 4S6  
T: 905.326.3749 | F: 905.326.2732  
Toll: 1.800.316.9430 | www.acrytecpanel.com

TITLE:

EXTERIOR WALL AT WINDOW LOCATION

D-18