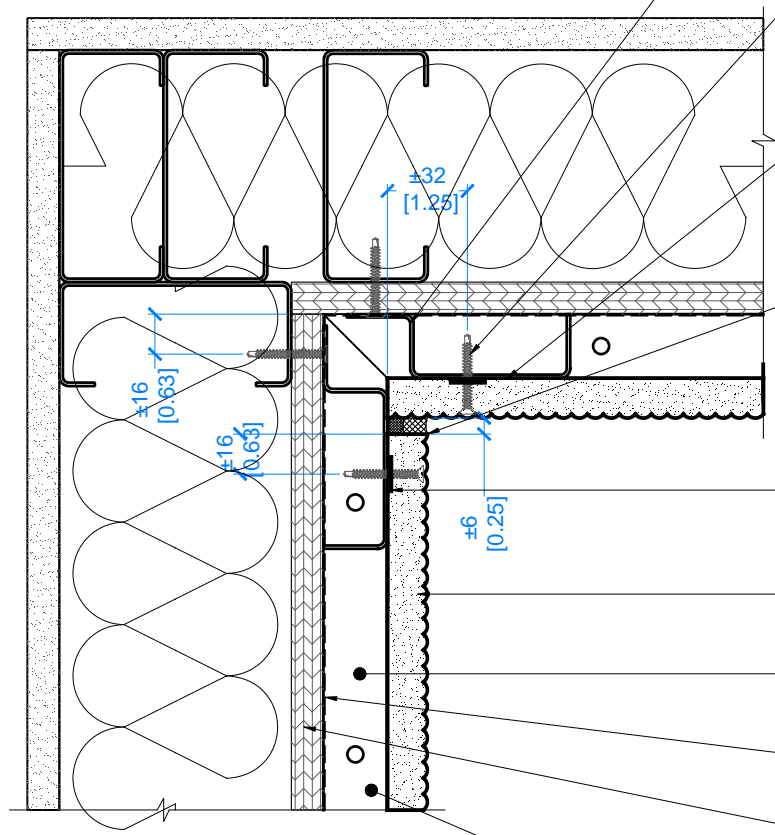


INTERIOR



18Ga GALVANIZED  
ACRY CHANNEL  
C/W DRAINAGE HOLES  
AT 100mm [4"]  
O.C. VERTICALLY, MOUNTED  
AT 400mm [15.75"] MAX. O.C.

ACRYTEC PANEL SPEC  
CORROSION COATED  
STAINLES STEEL FASTENERS  
SET BACK MIN. 16mm [0.625"]  
FROM EDGE OF PANEL

26Ga GALVANIZED  
ACRY-90 PIECE  
90mmX50mm [3.5"X2"]  
VERTICALLY MOUNTED  
NOT REQUIRED WITH ILLMOD 600

COLOUR MATCHED SEALANT  
AND BACKER ROD  
OR USE ILLMOD 600

12mm [0.5"] BEAD OF  
ACRYTEC SPECIFIED ADHESIVE  
APPLY CONTINUOUSLY TO  
ALL ACRY CHANNEL

ACRYTEC PANEL

25mm [1"] DRAINAGE CAVITY

MOISTURE BARRIER

EXTERIOR SHEATHING

HORIZONTAL CHANNEL  
AT BOTTOM OF WALL  
(OPTIONAL)

TITLE:

**INSIDE CORNER**

SCALE: N/A

**D-15**