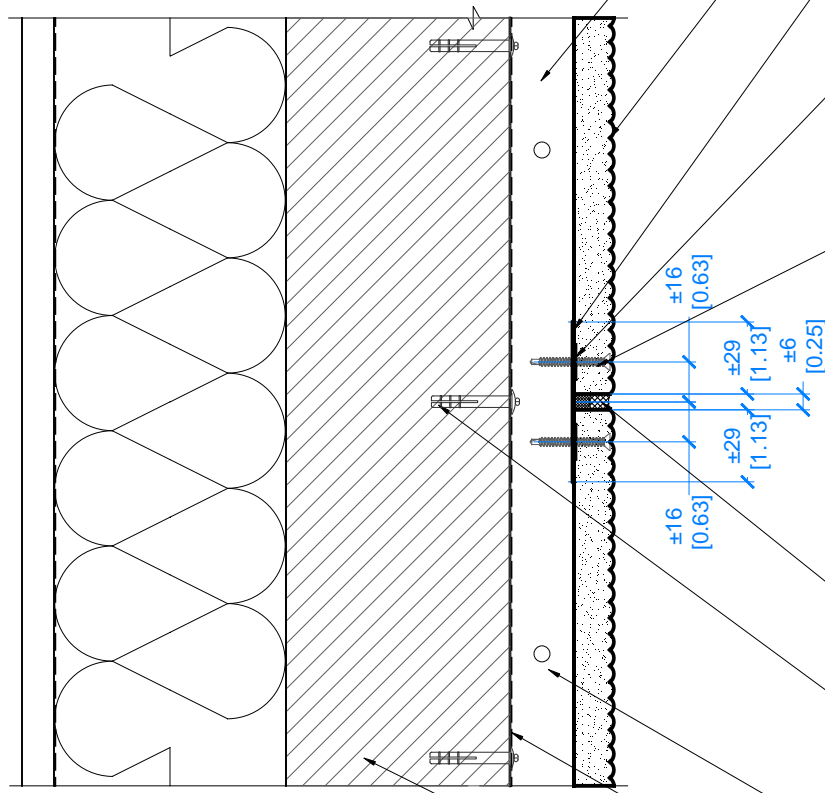


INTERIOR



18 Ga GALVANIZED ACRY CHANNEL  
C/W DRAINAGE HOLES AT 100mm [4"]  
O.C. VERTICALLY MOUNTED AT 400mm  
[15.75"] MAX. O.C.

ACRYTEC PANEL

ACRY-BAND  
26Ga GALVANIZED FLAT TRIM PIECE  
64mm [2.5"] WIDE HORIZONTALLY  
MOUNTED AT JOINTS (TYP).  
NOT REQUIRED WITH ILLMOD 600

12mm [0.5"] BEAD OF  
ACRYTEC SPECIFIED ADHESIVE  
APPLY CONTINUOUSLY TO  
ALL ACRY CHANNEL

ACRYTEC PANEL SPEC  
CORROSION COATED  
STAINLESS STEEL FASTENERS  
SET BACK MIN. 16mm [0.625"]  
FROM EDGE OF PANEL

COLOUR MATCHED SEALANT  
AND BACKER ROD  
OR USE ILLMOD 600

STAINLESS STEEL  
1/4-1 1/4 CONCRETE  
SCREW FOR HOLOW BLOCKS  
AND MASONRY

25mm [1"] DRAINAGE CAVITY

MOISTURE BARRIER

CONCRETE WALL TYPICAL