

12mm BEAD OF ACRYTEC SPECIFIED ADHESIVE APPLIED TO ENTIRE LENGTH OF WOOD STRAPPING

1" x 4" WOOD STRAPPING VERTICALLY MOUNTED AT 400mm MAX. O.C.

ACRYTEC PANEL

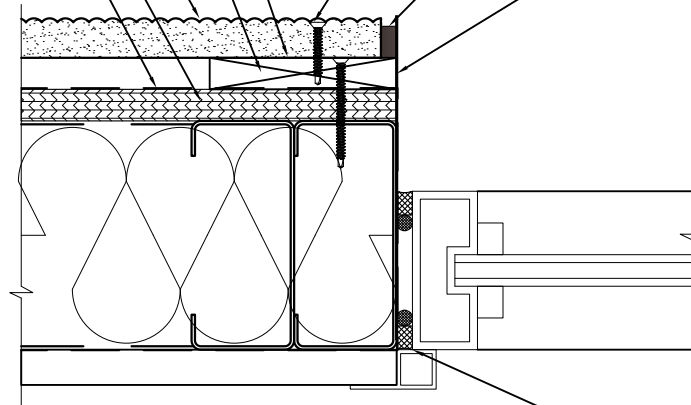
EXTERIOR SHEATHING

MOISTURE BARRIER

ACRYTEC PANEL SPEC CORROSION COATED STAINLESS STEEL FASTENERS SET BACK MIN. 16mm FROM EDGE OF PANEL

WILLSEAL 600 PRE-COMPRESSED POLYURETHANE FOAM SEALANT

FLASHING



SEAL BETWEEN WINDOW FRAME USING AN APPROVED SEALANT

INTERIOR



40 Gaudaur Road, Unit 1  
Woodbridge, Ontario, Canada, L4L 4S6  
T: 905.326.3749 | F: 905.326.2732  
Toll: 1.800.316.9430 | [www.acrytecpanel.com](http://www.acrytecpanel.com)

TITLE:

**VERTICAL JAMB DETAIL  
RECESSED WINDOW**

SCALE: N/A

**DW-23**