

WILLSEAL 600 PRE-COMPRESSED
POLYURETHANE FOAM SEALANT

12mm BEAD OF
ACRYTEC SPECIFIED ADHESIVE
APPLIED TO THE ENTIRE
LENGTH OF WOOD STRAPPING

STAINLESS STEEL FASTENER

STRUCTURAL METAL STUD

EXTERIOR SHEATHING

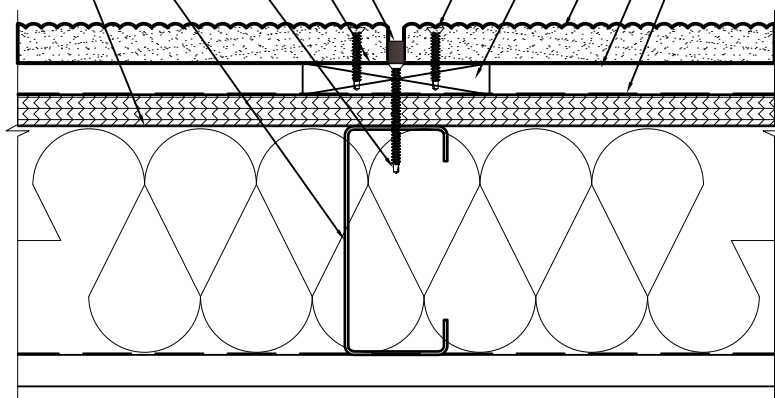
ACRYTEC PANEL SPEC
CORROSION COATED STAINLESS
STEEL FASTENERS SET BACK
MIN. 16mm FROM EDGE OF PANEL

1" x 4" WOOD STRAPPING
VERTICALLY MOUNTED
AT 400mm MAX. O.C.

ACRYTEC PANEL

MIN. 12mm DRAINAGE CAVITY

MOISTURE BARRIER



INTERIOR



40 Gaudaur Road, Unit 1
Woodbridge, Ontario, Canada, L4L 4S6
T: 905.326.3749 | F: 905.326.2732
Toll: 1.800.316.9430 | www.acrytecpanel.com

**EXISTING WALL METAL FRAMING
VERTICAL BUTT JOINT**

SCALE: N/A

DW-04