

12mm BEAD OF ACRYTEC
SPECIFIED ADHESIVE
APPLIED TO THE ENTIRE
LENGTH OF ACRY CHANNEL

18Ga GALVANIZED
ACRY CHANNEL
VERTICALLY
MOUNTED
AT 400mm MAX. O.C.

FLASHING AT
BOTTOM OF WALL

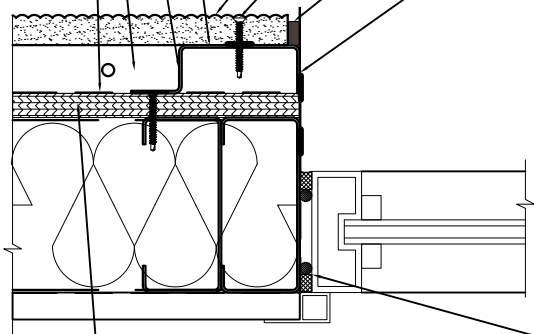
MOISTURE BARRIER

ACRYTEC PANEL

ACRYTEC PANEL SPEC
CORROSION COATED
STAINLESS STEEL FASTENERS
SET BACK MIN. 16mm
FROM EDGE OF PANEL

WILLSEAL 600 PRE-COMPRESSED
POLYURETHANE FOAM SEALANT

FLASHING



EXTERIOR
SHEATHING

SEAL BETWEEN WINDOW FRAME
USING AN APPROVED SEALANT

INTERIOR

 **Acrytec**
PANEL INDUSTRIES
40 Gaudaur Road, Unit 1
Woodbridge, Ontario, Canada, L4L 4S6
T: 905.326.3749 | F: 905.326.2732
Toll: 1.800.316.9430 | www.acrytecpanel.com

TITLE:

**VERTICAL JAMB DETAIL
RECESSED WINDOW**

SCALE: N/A

DS-23