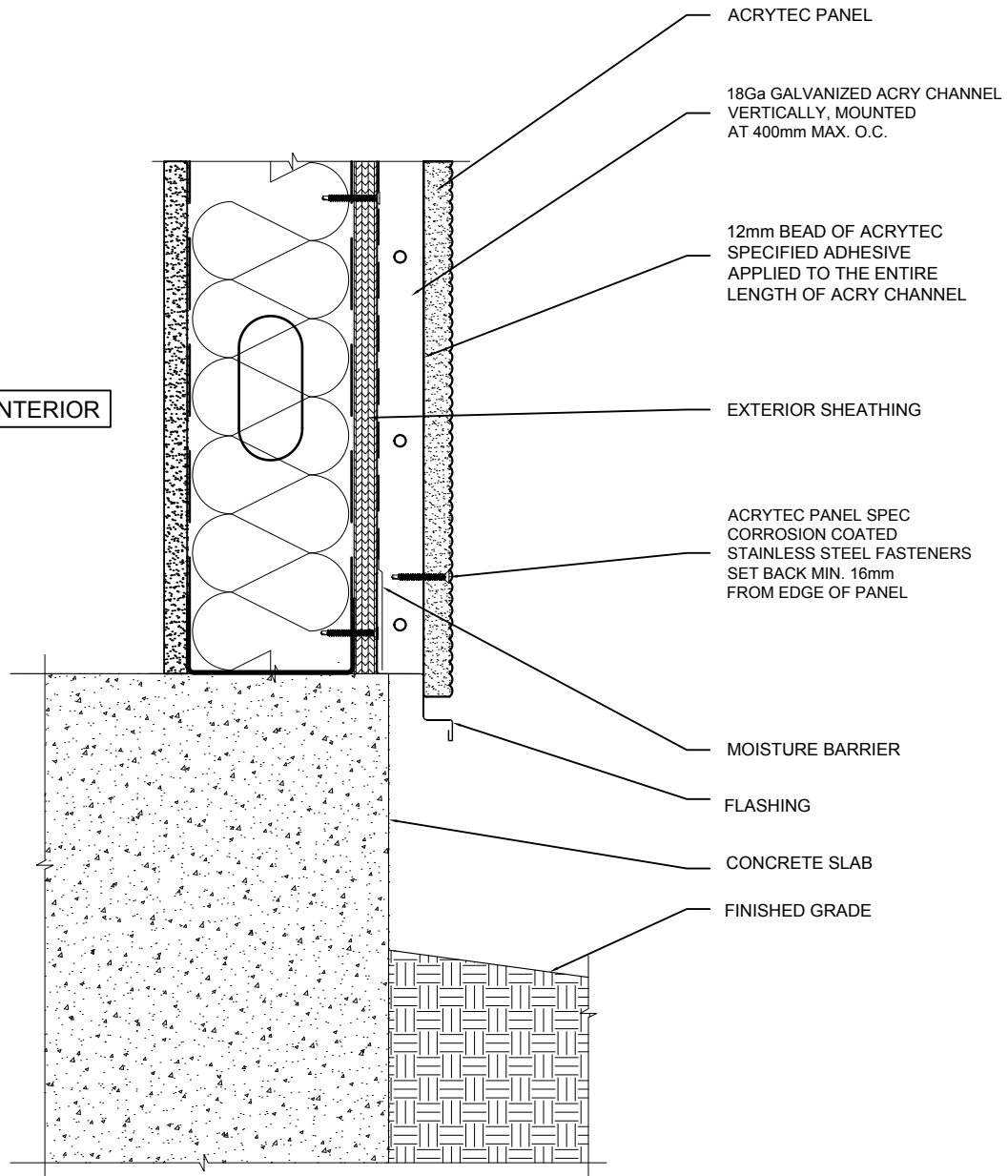


INTERIOR



ACRYTEC PANEL

18Ga GALVANIZED ACRY CHANNEL  
VERTICALLY, MOUNTED  
AT 400mm MAX. O.C.

12mm BEAD OF ACRYTEC  
SPECIFIED ADHESIVE  
APPLIED TO THE ENTIRE  
LENGTH OF ACRY CHANNEL

EXTERIOR SHEATHING

ACRYTEC PANEL SPEC  
CORROSION COATED  
STAINLESS STEEL FASTENERS  
SET BACK MIN. 16mm  
FROM EDGE OF PANEL

MOISTURE BARRIER

FLASHING

CONCRETE SLAB

FINISHED GRADE

 **Acrytec**  
PANEL INDUSTRIES  
40 Gaudaur Road, Unit 1  
Woodbridge, Ontario, Canada, L4L 4S6  
T: 905.326.3749 | F: 905.326.2732  
Toll: 1.800.316.9430 | [www.acrytecpanel.com](http://www.acrytecpanel.com)

**EXISTING WALL AT  
FINISHED GRADE**

SCALE: N/A

**DS-17**